

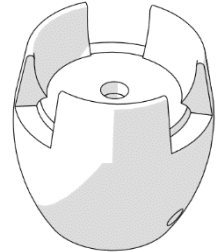
Product Installation Guidelines

Version 3, 4 June 2024, Page 1 of 3

Ezy Drink Lead Safe™ Drinking Bubbler Tap Replacement Mouthguard

PRODUCT CODES:

- 170.91.00.31



SPECIFICATIONS

- Replacement mouthguard for Galvin Engineering Ezy-Drink bubbler taps.
- Made from Lead Free™ DR Brass*

IMPORTANT: All mouthguards are tested in accordance with AS/NZS 3718 and leave our premises in good working order.

*Our Lead Safe™ product range is compliant with the Lead-Free Requirements of the NCC 2022 Vol. Three, Clause A5G4(2) and NSF/ANSI 372.

WARNINGS: Special attention to be paid on notes, photos, images, or drawings of assembly steps marked with the warning symbol.



TECHNICAL DATA

Inlet	G ½" – Female	
Outlet	Rubber Mouthguard	
Headwork	N/A	
Working Pressure Range (kPa)	Min	50
	Max	500
Working Temperature Range (°C)	Min	5
	Max	60
Nominal Flow Rate (LPM)	N/A	
Construction	Stainless Steel/EPDM	

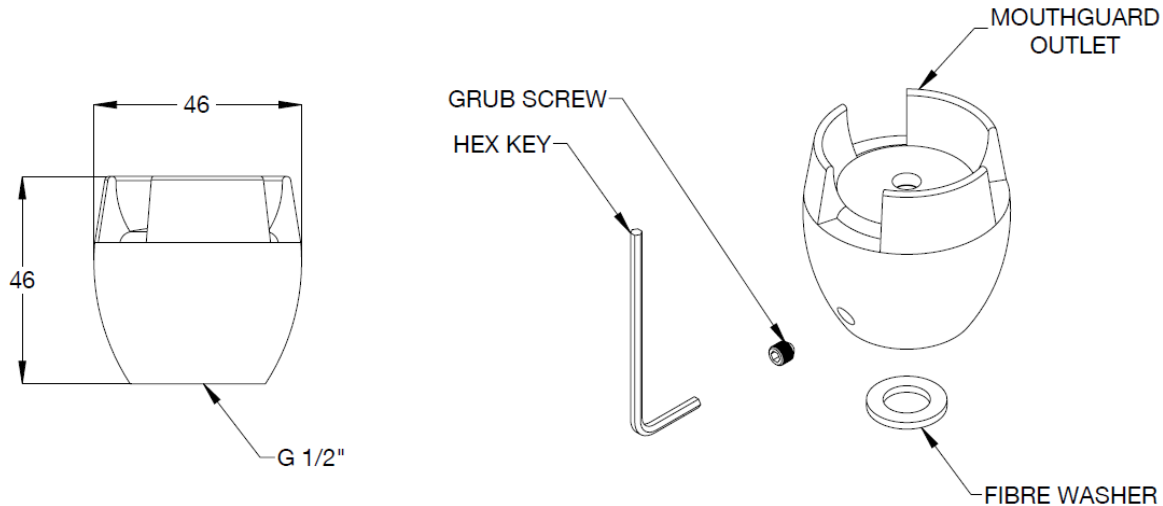
NOTE: Galvin Engineering continually strives to improve their products. Specifications may change without notice.

TOOLS REQUIRED

- Hex Key (supplied)

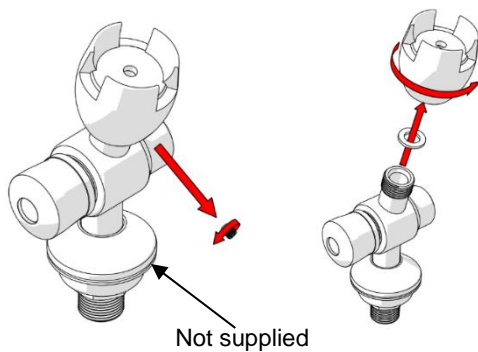
PRE-INSTALLATION

DIMENSIONS



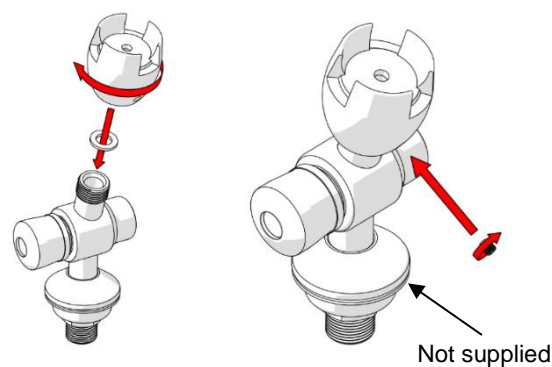
INSTALLATION

IMPORTANT: Galvin Engineering products must be installed in accordance with these installation instructions and in accordance with AS/NZS 3500, the PCA and your local regulatory requirements. Water and/or electrical supply conditions must also comply to the applicable national and/or state standards. Failing to comply with these provisions shall void the product warranty and may affect the performance of the product.



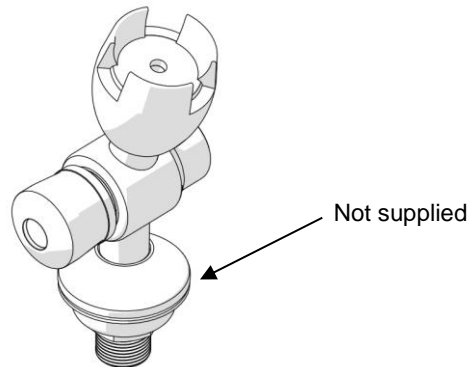
1. Remove existing mouthguard

- Isolate mains water.
- Using the supplied hex key, remove the grub screw on the existing mouthguard.
- Once the grub screw has been removed, unscrew and remove the existing mouthguard.
- Ensure the existing outlet is free of debris before installing the new mouthguard.



2. Fit new mouthguard

- Fit supplied fibre washer into the mouthguard inlet.
- Fit and screw on new mouthguard as shown until it stops.
- Fit and screw the supplied grub screw.



3. Test

- Once the new mouthguard has been installed, turn on mains water and test for correct operation.

TROUBLESHOOTING

PROBLEM	CAUSE	RECTIFICATION
Leaks	Incorrectly installed.	Follow the installation instructions and ensure the fibre washer is correctly installed and the inlet sits flush on the outlet. Check for debris in the outlet.
Outlet still rotates	Grub screw incorrectly installed.	Follow installation instructions and ensure the grub screw is fitted correctly and tightened.
Water is not flowing from mouthguard outlet	Water is turned off	Turn on water
Inconsistent flow	Blocked mouthguard	Remove mouthguard and clean.

WARRANTY

Galvin Engineering products are covered under our Manufacturer's Warranty. Galvin Engineering products must be installed in accordance with the installation instructions and in accordance with AS 3500 and NCC Volume Three, relevant Australian Standards and local authorities applicable to product being installed. Water and electrical supply conditions must also comply to the applicable national and/or state standards, failing to comply with these provisions may void the product warranty and affect performance of the product.

Please visit www.galvinengineering.com.au to view the full warranty, our Installation Compliance and Maintenance & Cleaning information as well as any other additional information.

Within Australia: 1300 514 074 Outside Australia: P: +61 (0)8 9338 2344

F: +61 (0)8 9338 2340

sales@galvinengineering.com.au

www.galvinengineering.com.au

ABN: 78 008 719 382

PERTH | SYDNEY | MELBOURNE | BRISBANE | ADELAIDE

